

74 Alexandra Road South, Whalley Range, Manchester, M16 8QJ



JP&Brimelow
ESTATE AGENTS

Offers In The Region Of £350,000

4 2 2 c

VIDEO TOUR AVAILABLE A delightful and well presented, FOUR BEDROOM, link detached property. Situated on a leafy residential road here in Whalley Range. Within walking distance to nearby independent bars and restaurants on Upper Chorlton Road. Tesco Metro is close by on Withington Road and there are excellent bus links on your doorstep, giving you the commuter direct access into the City Centre or Manchester International Airport. Excellent primary and secondary schools are just a short distance away. In brief the property consists of; An entrance hall with downstairs W.C, a good-sized lounge to the front aspect, a kitchen/ diner and a conservatory which has views and access out into the rear garden. Whilst to the first floor the landing reveals four bedrooms, the master benefitting from an en-suite. A white three-piece bathroom completes this lovely home. The property benefits from gas fired central heating, a driveway providing off road parking and a rear enclosed garden.





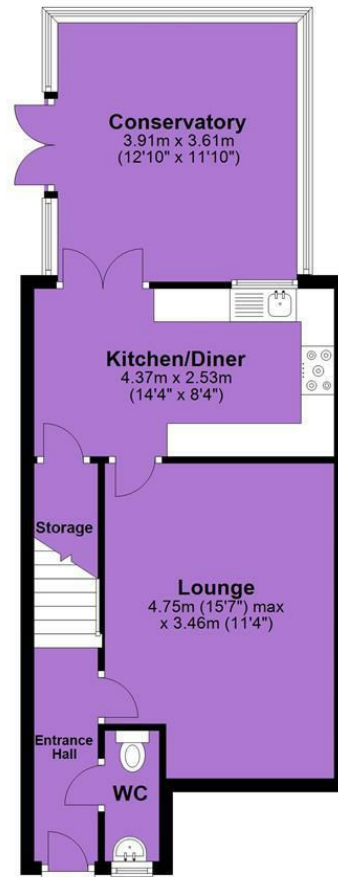
EPC Chart

Energy Efficiency Rating		Current	Potential
Very energy efficient - lower running costs			
(92 plus) A			85
(81-91) B		71	
(69-80) C			
(55-68) D			
(39-54) E			
(21-38) F			
(1-20) G			
Not energy efficient - higher running costs			
England & Wales		EU Directive 2002/91/EC	

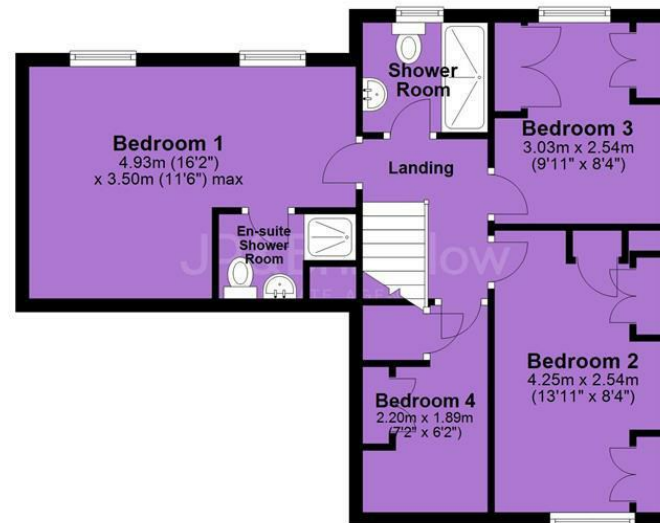


Tenure: **Leasehold** Council Tax Band: **C**

Ground Floor



First Floor



JP & Brimelow Estate Agents Ltd
430 Barlow Moor Road, Manchester, M21 8AD
Tel: 0161 8822233
E: sales@jpbrimelow.co.uk www.jpandbrimelow.co.uk



JP & Brimelow
ESTATE AGENTS

NOTICE: JP & Brimelow Estate Agents Ltd for themselves and for the vendors or lessors of this property whose agents they are give notice that:

- (i) the particulars are set out as a general outline only for the guidance of intending purchasers or lessees, and do not constitute, nor constitute part of, an offer or contract;
- (ii) all descriptions, dimensions, references to the condition and necessary permissions for use and occupation, and other details are given in good faith and are believed to be correct but any intending purchasers or tenants should not rely on them as statements or representations of fact but must satisfy themselves by inspection or otherwise as to the correctness of each of them;
- (iii) no person in the employment of JP & Brimelow Estate Agents Ltd has any authority to make or give any representation or warranty whatever in relation to this property.

[jpandbrimelowestateagents](https://www.instagram.com/jpandbrimelowestateagents)

[@jpandbrimelow](https://twitter.com/jpandbrimelow)